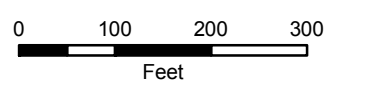
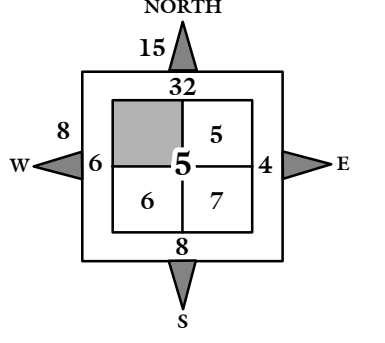
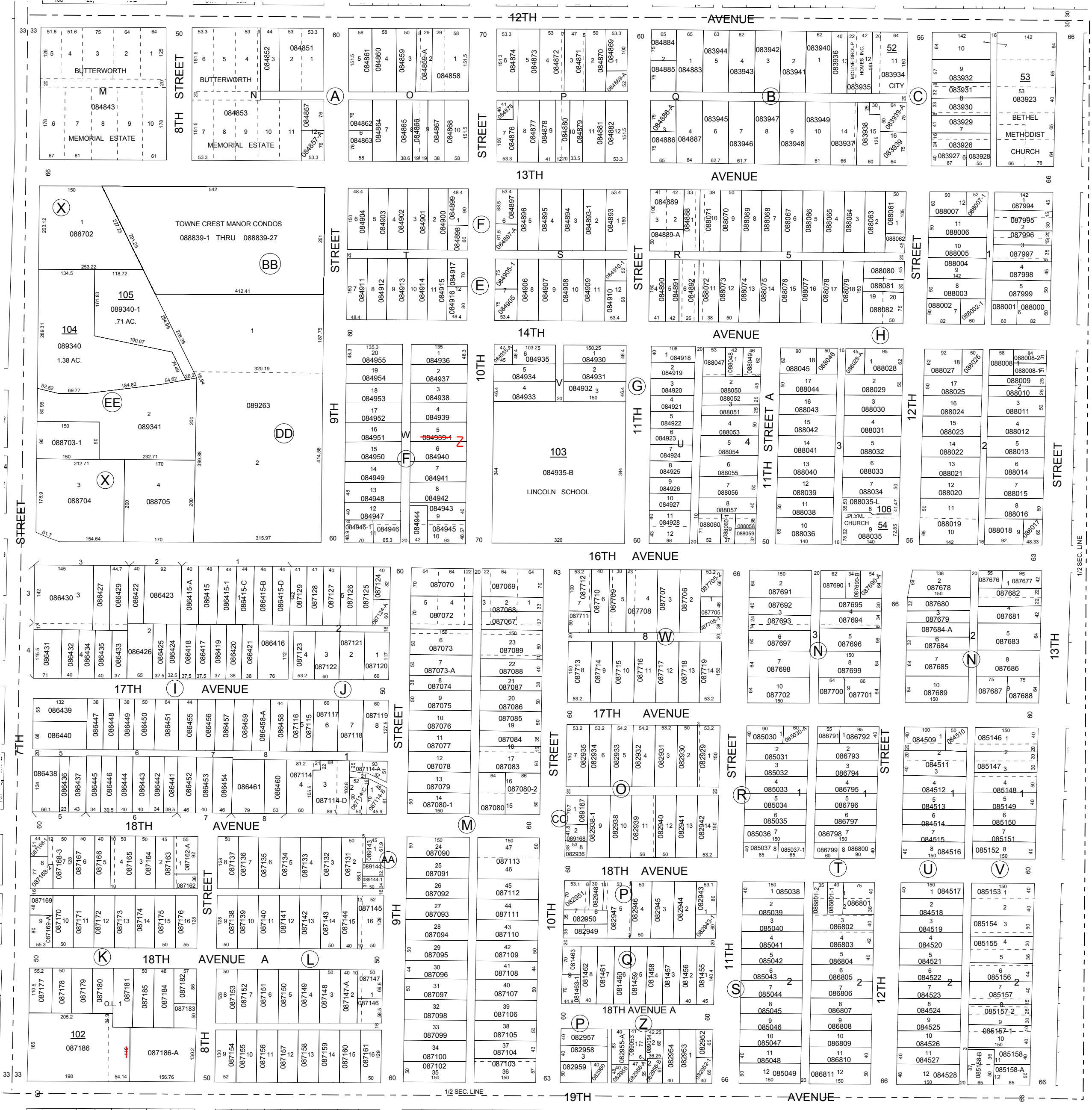


NOTE: STARTING IN 2002, PARCEL NUMBERS WILL NOT REFLECT THE TOWNSHIP ABBREVIATIONS, BUT THE 2-DIGIT TOWNSHIP NUMBER.



GIS DEPARTMENT
ROCK ISLAND COUNTY,
ILLINOIS

FOR SUBDIVISION
INFORMATION
SEE SHEET 4-S



SUPERVISORS' ASSESSMENT
MAP OF
N.W. 1/4 SECTION 5
T.17N., R.1W. OF 4TH P.M.
MOLINE TOWNSHIP
SUPPLEMENTAL FOR 2006