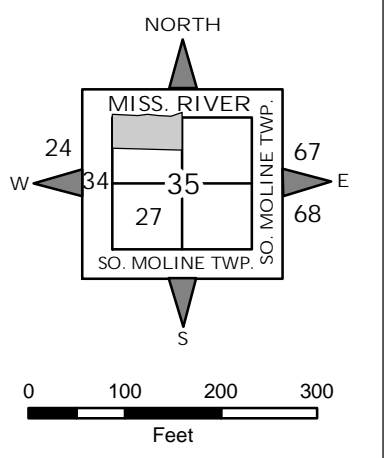


NOTE: STARTING IN 2002, PARCEL NUMBERS WILL NOT REFLECT THE TOWNSHIP ABBREVIATIONS, BUT THE 2-DIGIT TOWNSHIP NUMBER.



GIS DEPARTMENT
ROCK ISLAND COUNTY,
ILLINOIS

(A)

MOLINE MANUFACTURING CO.'S 1ST ADD. - FILED MARCH 13, 1908, IN PLAT BOOK 10, PAGE 55. 083670 - 3675

(B)

HACKERSON ADD. - FILED JULY 27, 1909, IN PLAT BOOK 11, PAGE 21. 083670 - 3675

(C)

MATTSON'S 55TH ST. ADD. - FILED DEC. 2, 1913, IN PLAT BOOK 12, PAGE 43. 084500 - 4508

(D)

EAST MOLINE ADD. - FILED JUNE 4, 1891, IN PLAT BOOK 4, PAGE 28. 082652 - 2782

(E)

C.G. THULIN'S 2ND ADD. - FILED NOV. 1, 1895, IN PLAT BOOK 6, PAGE 36. 087255 - 7333

(F)

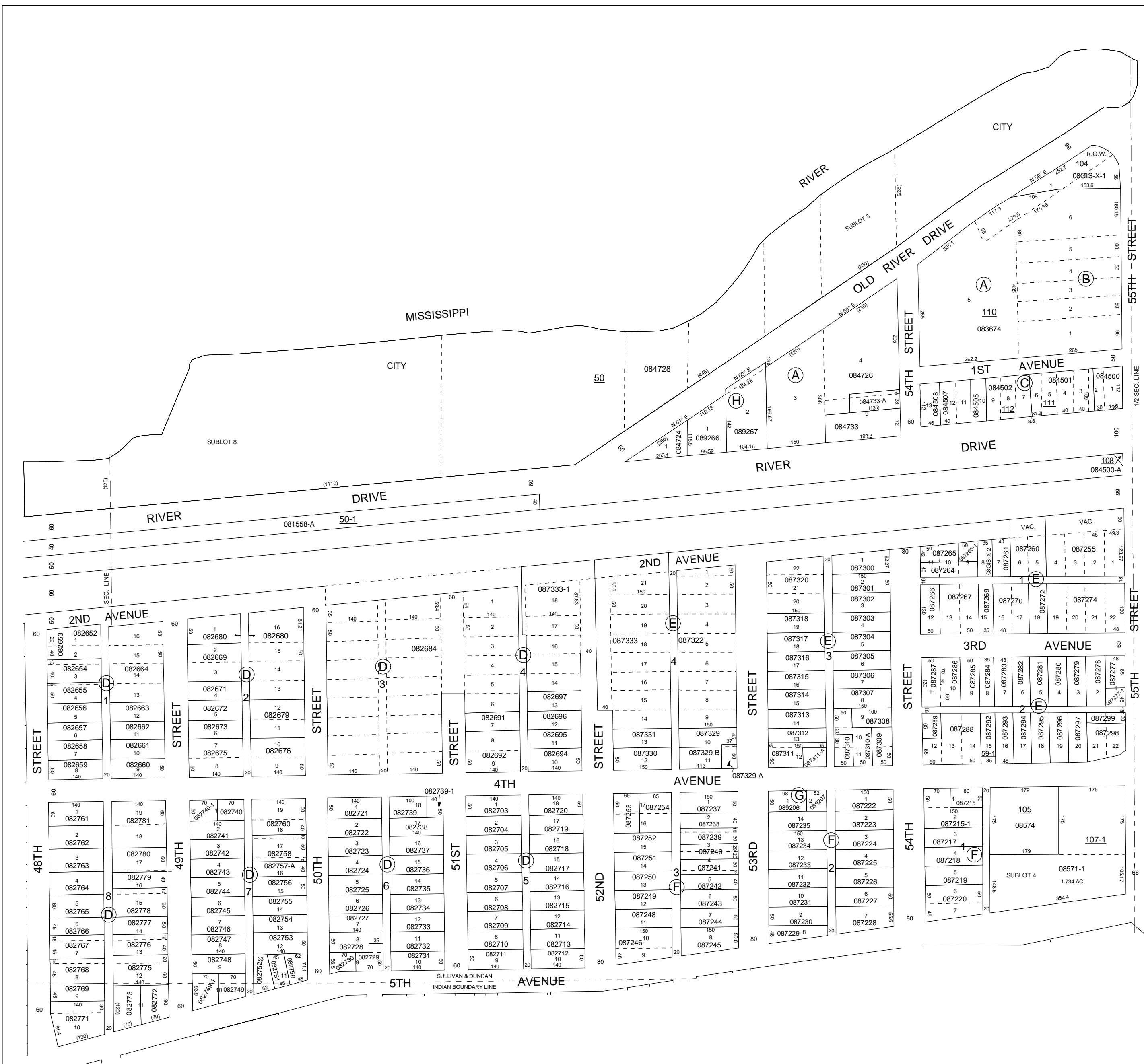
C.G. THULIN'S ADD. - FILED DEC. 10, 1892, IN PLAT BOOK 5, PAGE 28. 087215 - 7254

(G)

HAUB'S SUBD. - FILED AUG. 30, 1984, IN PLAT BOOK 46, PAGE 144. 089206 - 9207

(H)

MOLINE MANUFACTURING CO.'S 2ND ADD. - FILED OCT. 26, 1994. 089266 - 9267



SUPERVISORS' ASSESSMENT
MAP OF
LOT 6, LECLAIR'S RESERVE,
T.18N., R.1W., 4TH P.M.
MOLINE TOWNSHIP
SUPPLEMENTAL FOR 2006
08-35
THIS IS NOT A LEGAL DOCUMENT