

MAP DEPT.
ROCK ISLAND COUNTY
ILLINOIS

REVISED TO:
MARCH 1, 1957
MARCH 1, 1959
JANUARY 1, 1962
JANUARY 1, 1965
JANUARY 1, 1967
JANUARY 1, 1969
JANUARY 1, 1974

(A) PARCEL V, MOLETTE ADDITION TO MOLINE - FILED OCT. 17, 1947, IN BOOK 27 OF PLATS, PAGE 246 M.8576-8600. S.M.6754 @ ON O.L.R.

(B) DEARMONT'S 1ST ADD. BEING A SUBD. OF Q.L. Q, PARCEL V, MOLETTE ADD. TO MOLINE - FILED JULY 28, 1954, IN BOOK 29 OF PLATS, PAGE 316. S.M.7982-7990

(C) PARCEL II, MOLETTE ADDITION TO MOLINE - FILED OCT. 17, 1947 IN BOOK 27 OF PLATS, PAGE 242. S.M.6359-6376 & 7359-7370

(D) BAKER'S SUBD. OF PART OF Q.L. P, PARCEL V, MOLETTE ADD. TO MOLINE, FILED FEB. 24, 1956 IN PLAT BOOK 30, PAGE 133. M.8600-1-8600-17

(E) SUBD. OF Q.L. F, PARCEL II, MOLETTE ADD. TO MOLINE, FILED FEB. 23, 1956 IN PLAT BOOK 30, PAGE 117. S.M.6747-1-6747-3.

(F) SUBD. OF Q.L. E, PARCEL II, MOLETTE ADD. TO MOLINE, FILED FEB. 23, 1956 IN PLAT BOOK 30, PAGE 113. S.M.6746-1-6746-6

(G) SUBD. OF Q.L. D, PARCEL II, MOLETTE ADD. TO MOLINE, FILED FEB. 23, 1956 IN PLAT BOOK 30, PAGE 129. S.M. 6745-1-

(H) SUBD. OF Q.L. G, PARCEL II, MOLETTE ADD. TO MOLINE, FILED FEB. 23, 1956 IN PLAT BOOK 30, PAGE 121. S.M.6748-1-6748-15.

(I) SUBD. OF Q.L. H, PARCEL II, MOLETTE ADD. TO MOLINE, FILED FEB. 25, 1956 IN PLAT BOOK 30, PAGE 125. S.M. 6749-1 - 6749-15.

(J) SHEVICK'S SUBD. - FILED OCT. 10, 1958 IN PLAT BOOK 33, PAGE 197. S.M. 9003 - 9006

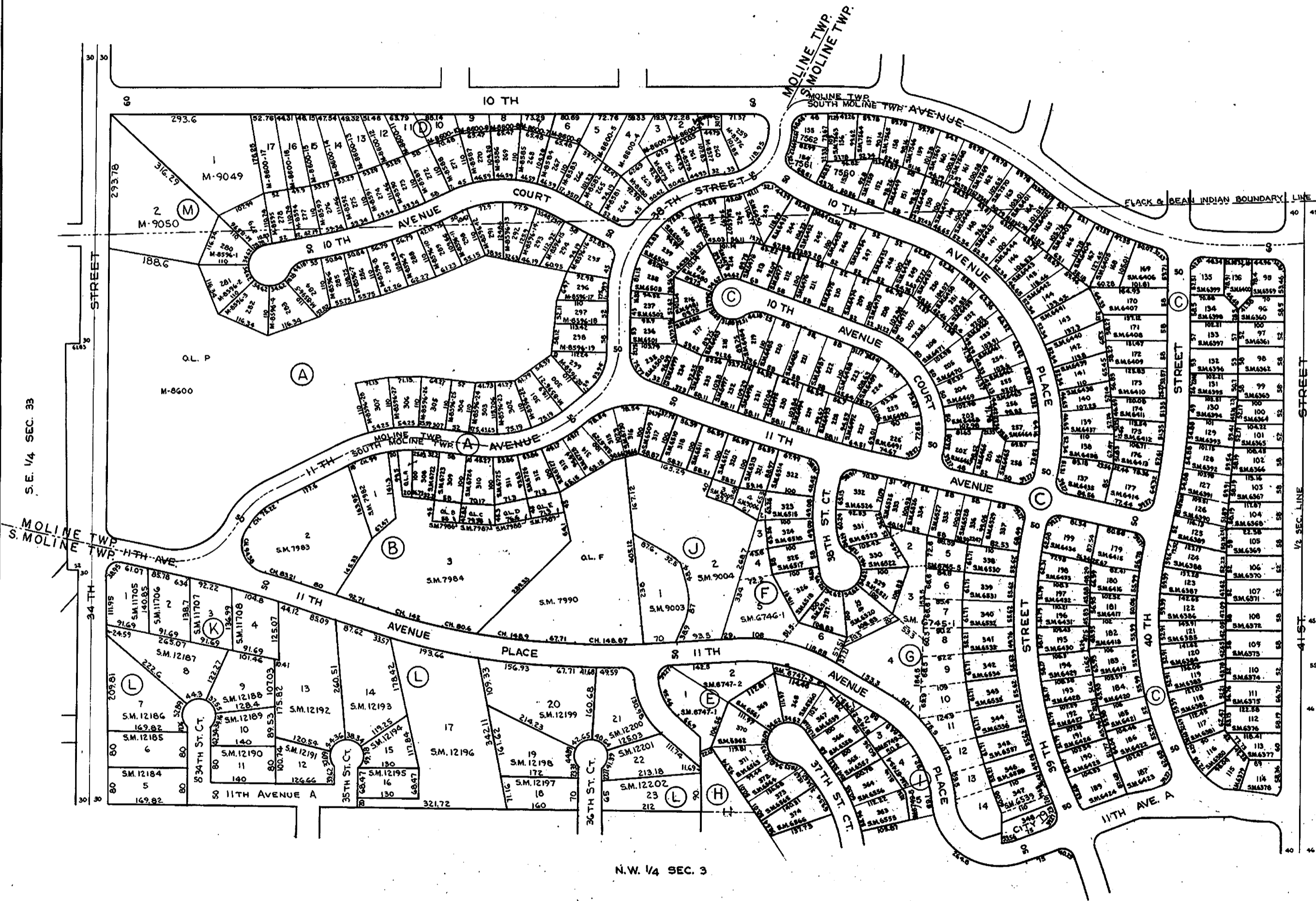
(K) CHERRY RIDGE - FILED JAN. 4, 1966 IN PLAT BOOK 40, PAGE 125. S.M. 11705 - 11708

(L) CHERRY RIDGE 2ND ADD.-FILED MAR. 14, 1968 IN PLAT BOOK 41, PAGE 335. S.M. 12184 - 12202

SUPERVISORS' ASSESSMENT
MAP OF

PART OF THE S.W. 1/4 OF SEC. 34-18-1W
OF THE 4TH P.M.
SOUTH MOLINE TOWNSHIP
SHEET 58

MOLINE TOWNSHIP
SHEET 26
SUPPLEMENTAL FOR 1974



(M) BONNE FOX SUBD. - FILED JULY 20, 1973 IN PLAT BOOK 43, PAGE 372. M-9049-9050

N.W. 1/4 SEC. 3

S.E. 1/4 SEC. 33

S.E. 1/4 SEC. 34