

MAP DEPT.
 ROCK ISLAND COUNTY
 ILLINOIS

REVISOR TO: AUGUST 15, 1956
 JANUARY 1, 1962
 JANUARY 1, 1965

(A) JANUARY 1, 1968
 (A) JANUARY 1, 1971
 (A) JANUARY 1, 1972
 (A) JANUARY 1, 1983
 (A) JANUARY 1, 1997

MOLINE WATER POWER CO'S WEST
 ADD. FILED AUG. 29, 1892 IN PLAT
 BOOK 3, PAGE 5. M-4956-4985-A.

(B) (4A)

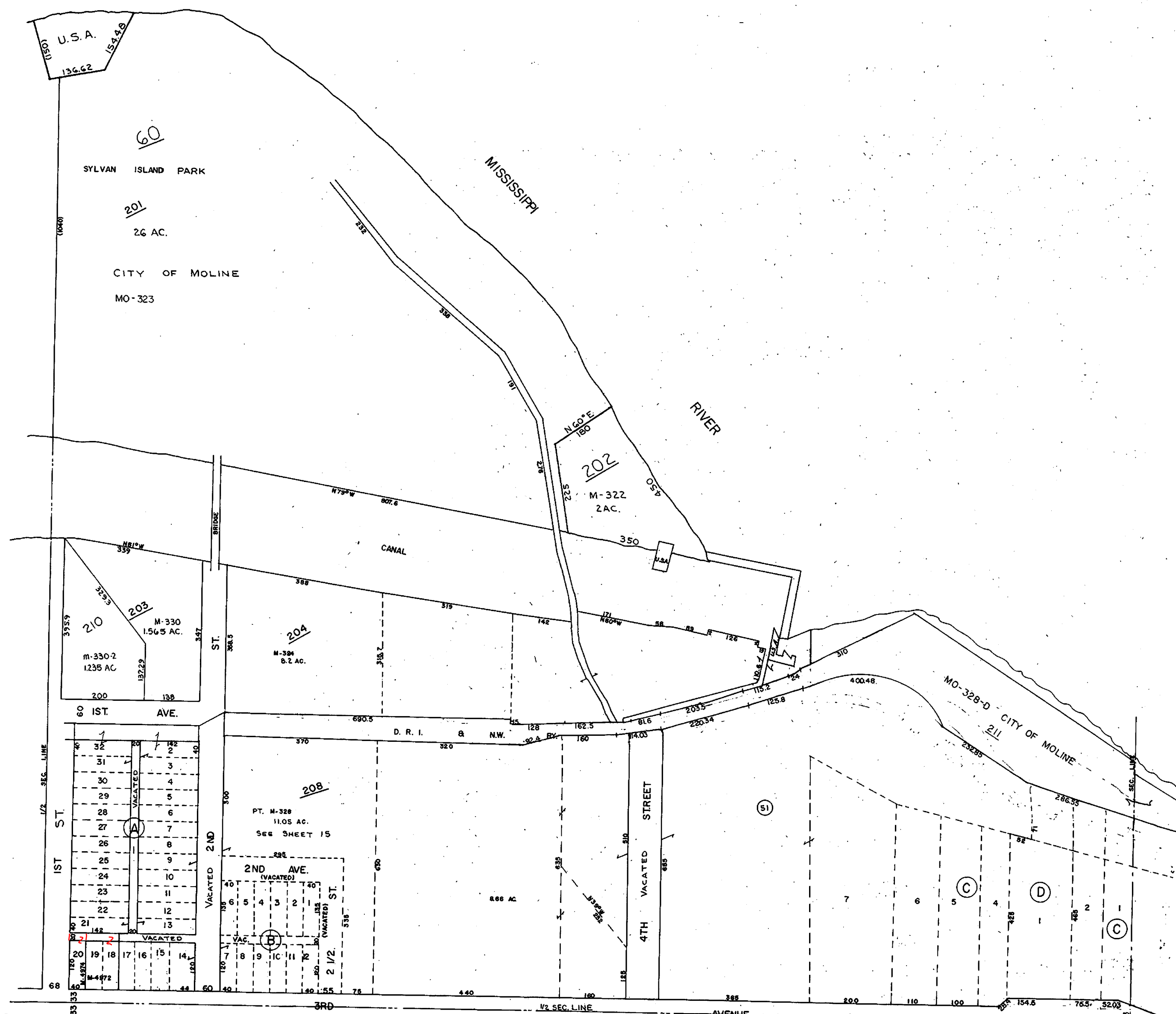
MOLINE WATER POWER CO'S 2ND WEST
 ADD. FILED AUG. 5, 1891 IN PLAT
 BOOK 4, PAGE 41. M-4986-4997.

(C) (4D)

MANUFACTURER'S ADD. FILED JULY 23,
 1874 IN PLAT BOOK 2, PAGE 31.
 M-4393-4394

(D) (4D)

NORMOYLE'S 1ST ADD. FILED MAR. 30,
 1954 IN PLAT BOOK 29, PAGE 264.
 M-4398.



SUPERVISORS' ASSESSMENT
 MAP OF
 FRL. NE 1/4 SEC. 31
 T. 18 N., R. 1 W. 4TH P.M.
 MOLINE TWP
 SUPPLEMENTAL FOR 1997
 SHEET 111