

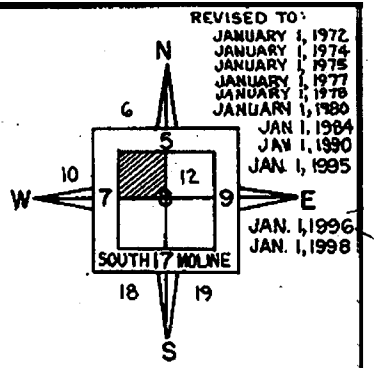
GLENVIEW 1ST ADD
FILED SEPTEMBER 1 1996
DOC 95-17513
M 9280-9284

MORGAN PARK ESTATES ADD.
FILED JULY 21, 1997
DOC. NO. 97-16220
MO-9297-9313

CALLAWAY COURTYARD
FILED 316-89 IN PB 46 PG 235
M 9224-9237

ELMER SWANSON'S ADD.-FILED JUNE
18, 1979 IN PLAT BOOK 45, PAGE 357.
M 9135-9136

CHARLES E. JOHNSON ADD.-FILED AUG.
19, 1977 IN PLAT: BOOK 45, PAGE 152.
M-9086-9090



MAP DEPT.
ROCK ISLAND COUNTY
ILLINOIS
REVISED TO: AUGUST 15, 1955
MARCH 1, 1958
MARCH 1, 1959
INDIAN HILL REPLAT FILED MAY 8, 1930
IN PLAT BOOK 19, PAGE 71.
M-4137-1 -4137-37.

SOUTH GLEN OAKS ADD. FILED JUNE 8,
1937 IN PLAT BOOK 22, PAGE 23.
M-6699-1 -6699-12.

SECOND SOUTH GLEN OAKS CT. ADD.
FILED SEPT. 6, 1950 IN PLAT BOOK
27, PAGE 364. M-6699-27 -6699-30.

SOUTH GLEN OAKS CT. ADD. FILED
MAY 10, 1946 IN PLAT BOOK 27, PAGE
114. M-6699-13 -6699-26.

GRAND VIEW ADD. UNRECORDED.
M-321-34 -321-46.

EXLINE ADD. UNRECORDED M-321-28 -
321-30.

GABRIEL'S SUBD. FILED JULY 23, 1956
IN PLAT BOOK 30, PAGE 201.
M-3451-1 -3451-6.

GLENVIEW ADD. UNRECORDED. M-306-315-4.
M-319-320.

HARRIS NELSON 3RD ADD.-FILED
JULY 15, 1958 IN PLAT BOOK 33,
PAGE 139. M-8636 -8650.

HENSLEY SUBD.-FILED AUG. 27,
1959 IN PLAT BOOK 33, PAGE 353.
M-8686 -8688.

HARRIS NELSON 4TH ADD.-FILED
APR. 20, 1961 IN PLAT BOOK 36,
PAGE 66. M-8736 -8747

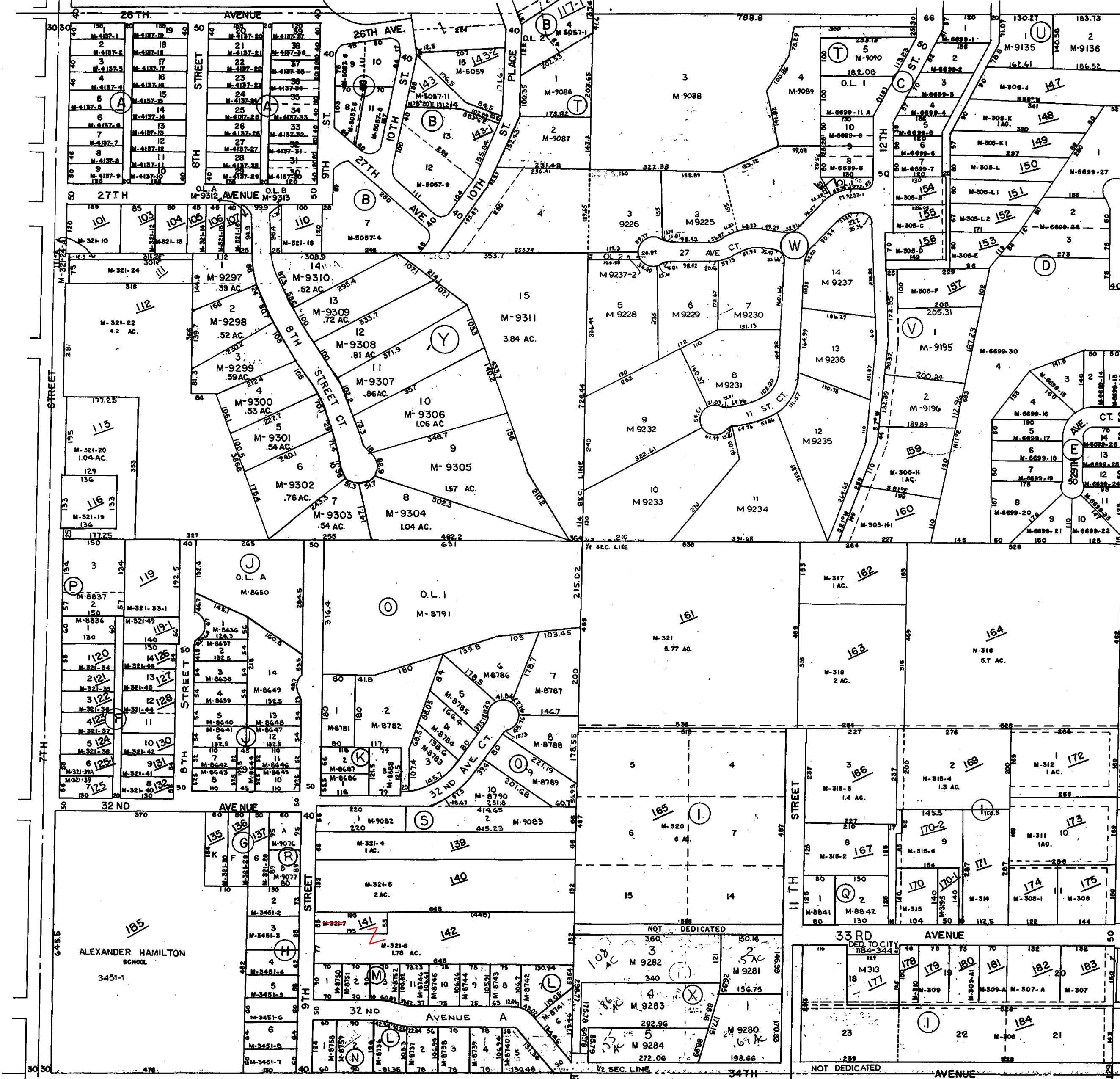
HARRIS NELSON 5TH ADD.-FILED
JAN. 24, 1962 IN PLAT BOOK 36,
PAGE 234. M-8750 -8752

ROELENS 1ST ADD.-FILED APR. 12, 1962
IN PLAT BOOK 36, PAGE 283.
M-8758 -8759.

GREENWOOD MANORS ADD.-FILED JAN.
2, 1963 IN PLAT BOOK 38, PAGE 63
M-8781 -8791

SUPERVISORS' ASSESSMENT
MAP OF
NW 1/4 SEC. 8
T.17N., R.17W. 4TH P.M.
17-08

SUPPLEMENTAL FOR 1998



RAILSBACK'S 1ST ADD.-FILED
OCT. 6, 1983 IN PB 46 PG 105.
M-9195-9196.

MARKESKI 1ST ADD.-FILED JULY 8, 1977
IN PLAT BOOK 45, PAGE 132.
M-9082-9083

SUBD LOT 1 GABRIEL'S SUBD.-FILED DEC. 10,
1976 IN PLAT BOOK 45, PAGE 84.
M-9076-9077

MACK'S 1ST ADD.-FILED JUNE 3, 1964
IN PLAT BOOK 39 PAGE 17.
M-8841-8842

SANDBURG 1ST ADD.-FILED MAR. 6, 1964
IN PLAT BOOK 38, PAGE 287.
M-8836-8838