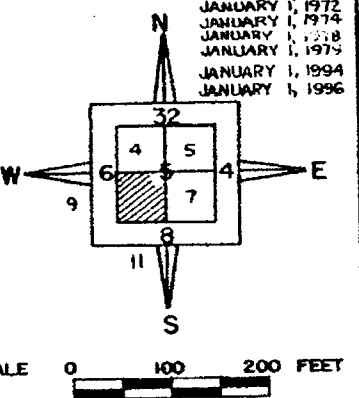


JANUARY 1, 1971
 JANUARY 1, 1972
 JANUARY 1, 1973
 JANUARY 1, 1974
 JANUARY 1, 1975
 JANUARY 1, 1976
 JANUARY 1, 1977
 JANUARY 1, 1978
 JANUARY 1, 1979
 JANUARY 1, 1980



MAP DEPT.
 ROCK ISLAND COUNTY
 ILLINOIS

REVISED TO:
 MARCH 1, 1957
 MARCH 1, 1959
 ABRAHAMSON ADDITION FILED MAR. 10, 1947
 IN PLAT BOOK 27, PAGE 187
 M-638-28-1 - 638-28-9

(A) JANUARY 1, 1961
 (A) JANUARY 1, 1963
 (A) JANUARY 1, 1967
 (A) JANUARY 1, 1968

(B) (1A)
 MIDLAND ADD. FILED APR. 9, 1914 IN PLAT
 BOOK 12, PAGE 59. M-4543-4583.

(C) (1B)
 GREIM'S 1ST ADD. FILED JUNE 1, 1891 IN
 PLAT BOOK 4, PAGE 27. M-3628-3637.

(D) (1B)
 GREIM'S 2ND ADD. FILED JULY 30, 1891 IN
 PLAT BOOK 4, PAGE 38. M-3638-3647.

(E) (1B)
 GREIM'S UNRECORDED 3RD ADD. M-161-165-J

(F) (1C)
 BLACKMAN'S ADD. FILED DEC. 5, 1891 IN
 PLAT BOOK 4, PAGE 60. M-1414-1434.

(G) (1C)
 ARTHUR DE LOOF'S 1ST ADD. FILED JUNE
 17, 1913 IN PLAT BOOK 12, PAGE 19.
 M-2562-2576.

(H) (1D)
 OLAF ANDERSON'S 1ST ADD. FILED MAY 19,
 1926 IN PLAT BOOK 19, PAGE 12.
 M-978-981

(I) (1D)
 DE JAEGER'S 2ND ADD. FILED FEB. 6, 1920
 IN PLAT BOOK 14, PAGE 53. M-2541-2561.

(J) (1D)
 DE JAEGER'S 1ST ADD. FILED APR. 24, 1911
 IN PLAT BOOK 11, PAGE 52. M-2528-2540-B

(K) (2D)
 EMMA D. VELJE'S ADD. FILED SEPT. 10, 1906
 IN PLAT BOOK 10, PAGES 11 & 12.
 M-7398-7564-A.

(L) (3A)
 HICKORY GROVE ADD. FILED NOV. 16, 1926
 IN PLAT BOOK 19, PAGE 18. M-3848-3871.

(M) (4A)
 MORGAN PARK ADD. FILED OCT. 14, 1926 IN
 PLAT BOOK 19, PAGE 16. M-5055-5102-B.

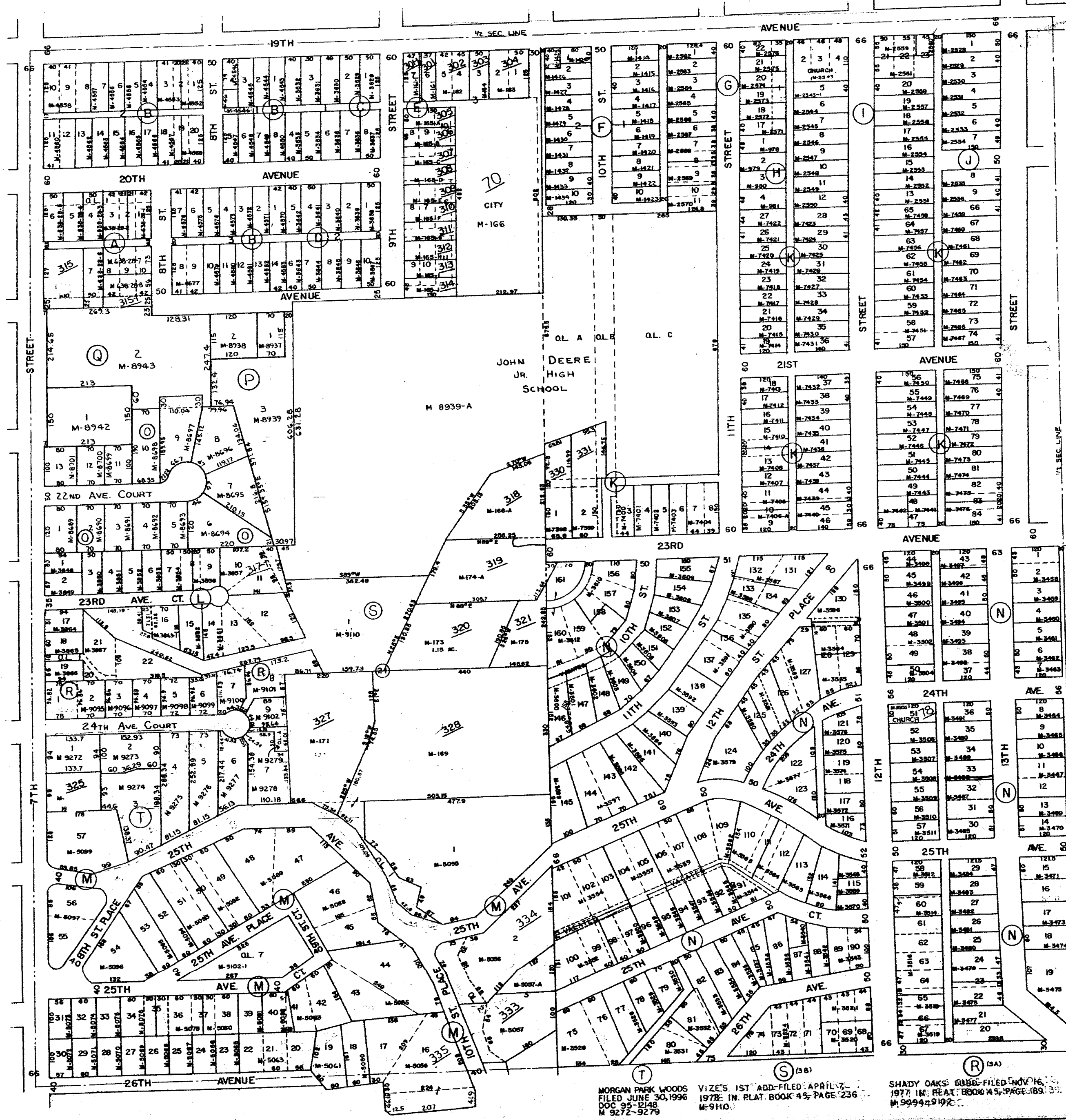
(N) (4C)
 GLEN OAKS ADD. FILED NOV. 4, 1913 IN PLAT
 BOOK 12, PAGE 44. M-3457-3612.

(O) (2A)
 LINCOLN COURT - FILED APRIL 8, 1960
 IN PLAT BOOK 35, PAGE 77. M-8689-8701

(P) (2A)
 EDWARDS & PHILLIPS SUBD.-FILED
 JUNE 2, 1967 IN PLAT BOOK 41, PAGE
 153. M-8937-8939

(Q) (2A)
 ALLAN L. JAHNS SUBD.-FILED JUNE
 14, 1967 IN PLAT BOOK 41, PAGE 165.
 M-8942-8943.

SUPERVISORS' ASSESSMENT
 MAP
 SW 1/4 SEC. 5
 T. 17 N., R. 1W. 4TH PM.
 17-05
 MOLINE TWP.
 SUPPLEMENTAL FOR 1996



MORGAN PARK WOODS
 FILED JUNE 30, 1996
 DOC. 95-1248
 M-9272-9279

VIZES 1ST ADD.-FILED APRIL 2,
 1977 IN PLAT. BOOK 45, PAGE 236
 M-9101

SHADY OAKS SUBD.-FILED NOV. 16,
 1977 IN PLAT. BOOK 45, PAGE 183-30
 M-9994-9996