

SCALE 0 100 200 FEET

REVISED TO: SEPTEMBER 1, 1956
MARCH 1, 1957
MARCH 1, 1958
MARCH 1, 1959
JANUARY 1, 1961
JANUARY 1, 1962
JANUARY 1, 1966
JANUARY 1, 1967
JANUARY 1, 1968
JANUARY 1, 1969
JANUARY 1, 1970

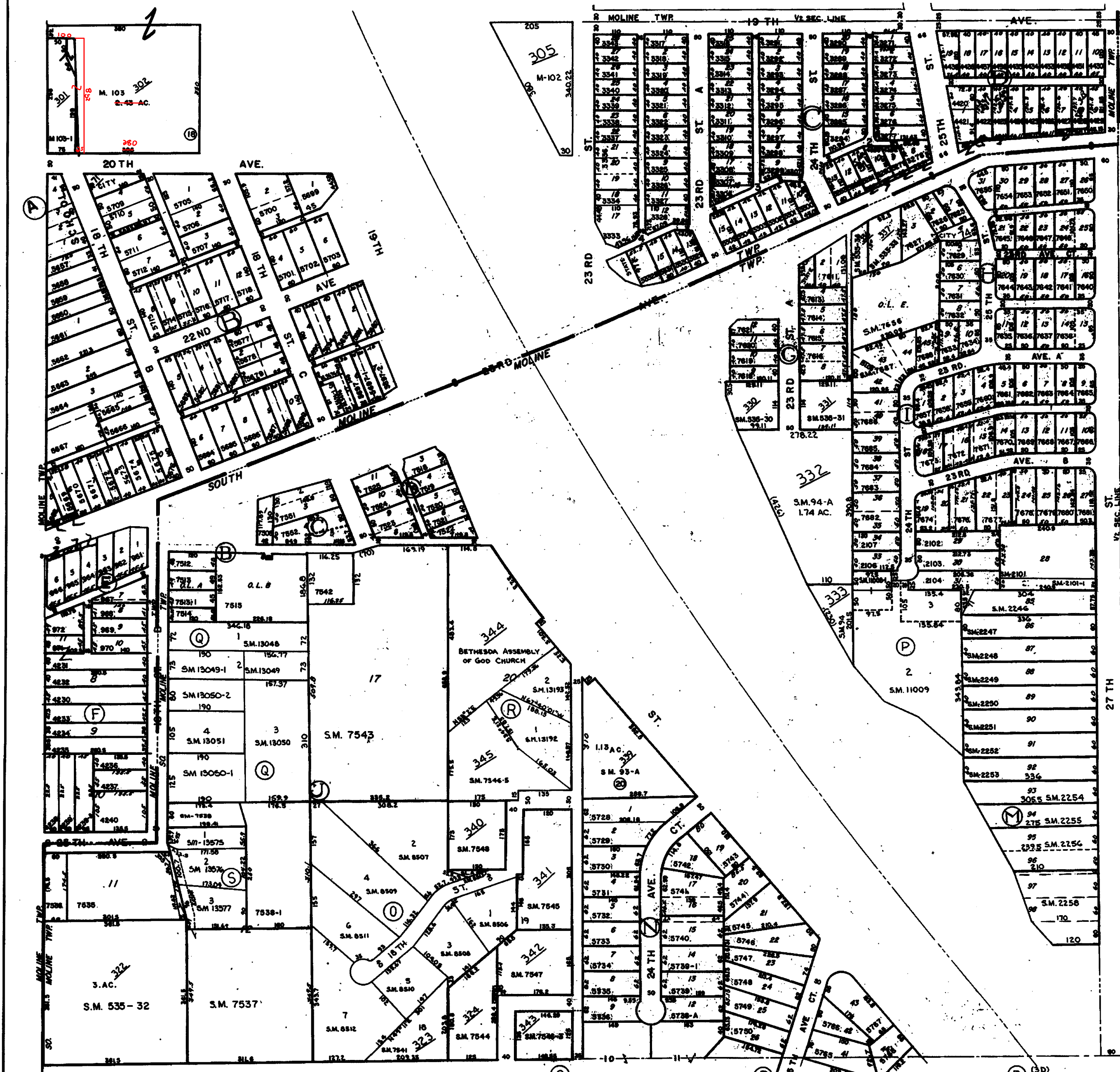
MOLINE TWP.

- (A) (1A) OPFERHEIMER'S 1ST ADD. TO MOLINE. FILED FEB. 13, 1914 IN BOOK OF PLATS 12 PAGE 52
- (B) (2A) PARK RIDGE ADD. TO MOLINE. FILED JUNE 6, 1890 IN BOOK OF PLATS 4 PAGE 13. 5857-5718
- (C) (1C) FERNWOOD ADD. TO MOLINE. FILED SEPT. 2, 1919 IN BOOK OF PLATS 14 PAGE 28 3271-3343
- (D) (1D) MAPLE ROW ADD. TO MOLINE. FILED NOV. 7, 1918 IN BOOK OF PLATS 14 PAGE 4420-4439
- (E) (3A) ANDERBERG'S RE-PLAT. FILED 12-16-1898 PLAT BOOK 7 PAGE 2. 961-972
- (F) LINCOLN HEIGHTS. 4230-4240

SOUTH MOLINE TWP.

- (B) (3A) F.W. RANK'S 1ST ADD. TO MOLINE. FILED JULY 10, 1929 IN BOOK OF PLATS 19 PAGE 57. SM-7506-7515
- (C) (3B) A.G. ANDERSON'S 1ST ADD. TO MOLINE. FILED SEPT. 21, 1910 IN BOOK OF PLATS 11 PAGE 44 SM-7549-7553
- (D) (2B) SMITH'S 1ST ADD. TO PARK RIDGE. FILED NOV. 10, 1890 IN BOOK OF PLATS 9 PAGE 22. SM-7516-7527
- (E) (2B) TILSON'S ADD. TO PARK RIDGE ADD. TO MOLINE. FILED MAR. 13, 1914 IN BOOK OF PLATS 12 PAGE 53 SM-7528-7534
- (F) (2C) CARLSON ESTATE ADD. TO MOLINE A PART OF LOT 20 ASSESSOR'S PLAT 1861. FILED JAN. 21, 1926. IN BOOK OF PLATS 19 PAGE SM-7554-7557
- (G) (2C) P. J. MEERSMAN'S ADD. TO MOLINE. FILED JULY 10, 1924. IN BOOK OF PLATS 15 PAGE 48 SM-7611-7624
- (H) (2D) PLEASANT RIDGE 1ST ADD. TO MOLINE. FILED MAY 24, 1928. IN BOOK OF PLATS 19 PAGE 47. SM-7625-7656
- (I) (2D) PLEASANT RIDGE 2ND ADD. TO MOLINE. FILED MAY 18, 1930 IN BOOK OF PLATS 19 PAGE 68 SM-7657-7688-2101-2107
- (J) (3B) LINCOLN HEIGHTS ADD. TO MOLINE. FILED NOV. 9, 1892. IN BOOK OF PLATS 5 PAGE 22 SM-7638-7648
- (K) (3C) PETER VANDER LINDEN'S ADD. IN THE W. 1/2 E. 1/2 S.W. 1/4 & O.L. 182 CARLSON ESTATE ADD. FILED APR. 6, 1932 IN BOOK OF PLATS 29 PAGE 71 SM-7719-7734
- (L) (4C) VILLA WOODS ADD. TO MOLINE. FILED AUG. 23, 1946 IN BOOK OF PLATS 27 PAGE 98 SM-5777-5783
- (M) (4D) VILLA PARK ADD. A PART OF S.W. 1/4 & S.E. 1/4 SEC. 4 & N.W. 1/4 & N.E. 1/4 SEC. 9 FILED SEPT. 10, 1927 IN BOOK OF PLATS 19 PAGE 34 SM-2246-2289
- (N) (4C) CRESTWOOD ADD. IN THE S.E. 1/4 S.W. 1/4 SEC. 4 & N.E. 1/4 N.W. 1/4 SEC. 9 17N R.1W. FILED JUNE 20, 1945 IN BOOK OF PLATS 27 PAGE 85 SM-5728-5736 + 5736.A-5751 + 5765-5768
- (O) (4B) OAK KNOLL SUBD. - FILED OCTOBER 26, 1936 IN PLAT BOOK 30, PAGE 253 S.M. 8506 - 8513.

SUPERVISORS' ASSESSMENT MAP OF S.W. 1/4 SEC. 4 T 17 N. R. 1 W. 4TH P.M. SUPPLEMENTAL FOR 1955 MOLINE & SOUTH MOLINE, TWPS. MOLINE, SHEET 3. SOUTH MOLINE, SHEET 15.



KARIN'S ADDITION - FILED DEC. 4, 1979 IN PLAT BOOK 45, PAGE 402. SM 13575 thru 13577.

HONSA'S 1ST ADD. FILED DEC. 28, 1977 IN PLAT BOOK 45, PAGE 208. SM-13192 - 13193

PLEASANT RIDGE 3RD ADD. FILED AUG. 3, 1964 IN PLAT BOOK 39, PAGE 72. S.M. 11008 - 11010.

CARLSON CREST - FILED MARCH 8, 1977 IN PLAT BOOK 45, PAGE 100. S.M. 13048 - 13051