

SCALE 0 100 200 300 FT.

MAP DEPT. ROCK ISLAND COUNTY ILLINOIS

REVISED TO: AUGUST 15, 1956

CORNWALL'S 1ST WOODLAWN ADD.-FILED SEPT. 24, 1900 IN PLAT BOOK 7, PAGE 22. M. 2216-2237

BAUSCH'S 1ST ADD.-FILED AUG. 22, 1904 IN PLAT BOOK 9, PAGE 4. M. 1377-1383.

HOLTS ADD.-FILED MAY 1, 1916 IN PLAT BOOK 13, PAGE 33. M. 3950-3955

BAUSCH'S 2ND ADD.-FILED AUG. 21, 1916 IN PLAT BOOK 13, PAGE 41. M. 1386-1395

FINCH'S ADD.-FILED AUG. 2, 1947 IN PLAT BOOK 27, PAGE 218. M. 3343-1-3343-22

PETER YAGERS 1ST ADD.-FILED AUG. 5, 1891 IN PLAT BOOK 4, PAGE 40. M. 8462-8472.

WITHERELL'S SUBD.-FILED MAY 6, 1873 IN DEED BOOK 56, PAGE 499. M. 8202-8203.

POSTS SUBD.-FILED JULY 15, 1873 IN DEED BOOK 56, PAGE 577. M. 6041-6044-1

WOODED HILLS ADD.-FILED MAY 9, 1940 IN PLAT BOOK 22, PAGE 58. M. 8415-1-8415-38

LUNDAHL'S 19TH ST. ADD.-FILED JUNE 18, 1902 IN PLAT BOOK 8, PAGE 7. M. 4272-4347.

LOGAN 3RD ADD.-FILED MAY 18, 1926 IN PLAT BOOK 19, PAGE 11. M. 4252-4271-1

LOGAN 2ND ADD.-FILED MAR. 2, 1926 IN PLAT BOOK 19, PAGE 9. M. 4255-4261

LOGAN ADD.-FILED OCT. 27, 1925 IN PLAT BOOK 15, PAGE 67. M. 4248-4254

SIMONSEN'S 2ND ADD.-FILED MAR. 16, 1904 IN PLAT BOOK 8, PAGE 47. M. 6516-6531

JAMES 2ND ADD.-FILED JUNE 19, 1914 IN PLAT BOOK 12, PAGE 71. M. 4178-4195

SIMONSEN & JAMES ADD.-FILED SEPT. 23, 1892 IN PLAT BOOK 5, PAGE 17. M. 6532-6557-8

ACME ADD.-FILED JUNE 6, 1904 IN PLAT BOOK 8, PAGE 59. M. 705-714.

MOLINE HEIGHTS ADD.-FILED MAY 9, 1889 IN PLAT BOOK 3, PAGE 95. M. 4663-4722

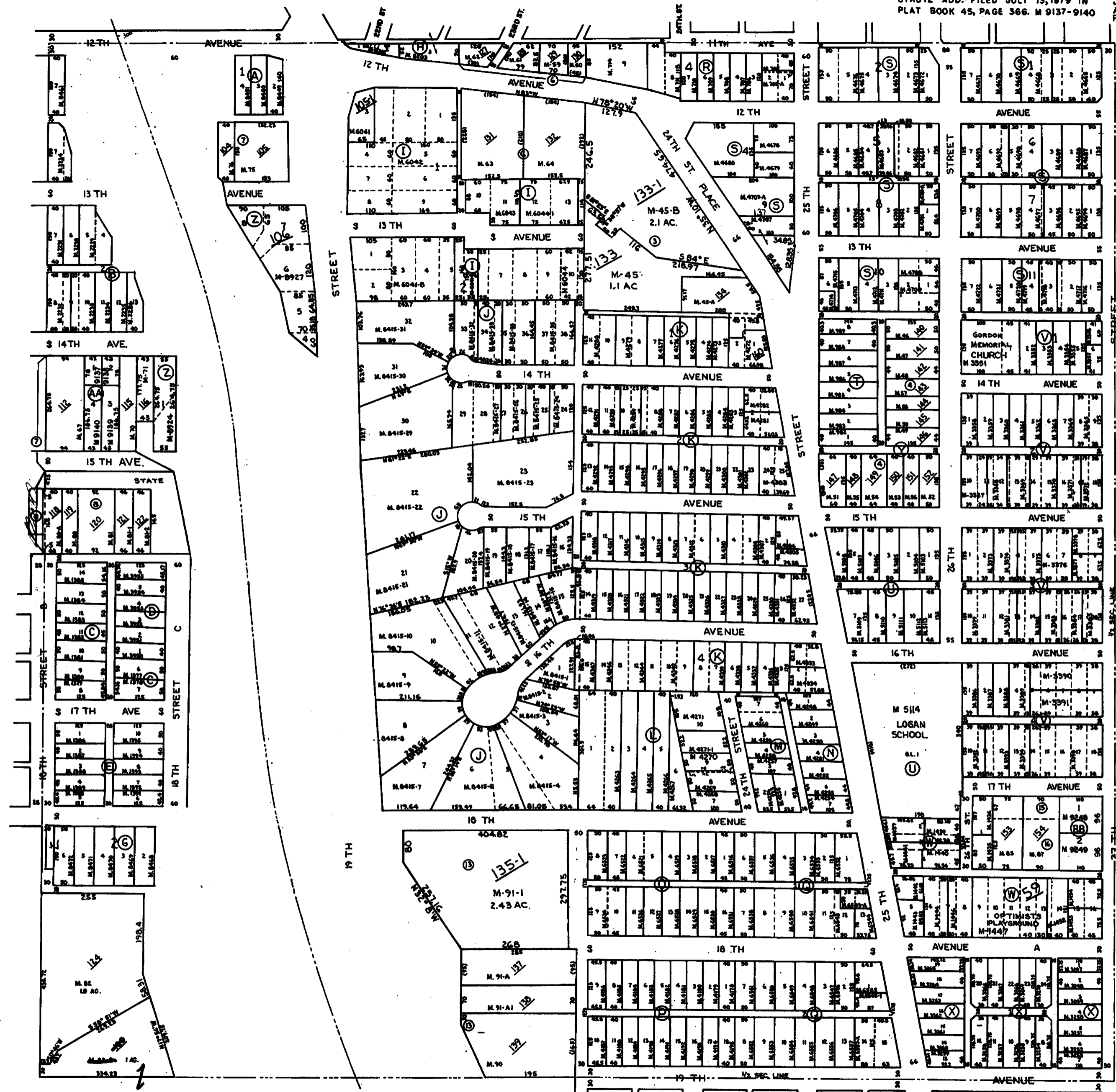
WM. ANDERSON'S 1ST ADD.-FILED SEPT. 4, 1923 IN PLAT BOOK 15, PAGE 37. M. 982-989.

LOUIS MUMM'S 1ST ADD.-FILED MAR. 6, 1913 IN PLAT BOOK 12, PAGE 15. M. 5103-5113.

SUPERVISORS' ASSESSMENT MAP OF

N.W. 1/4 SEC. 4, T. 17 N., R. 1 W., OF 4TH P.M. 17-04-

MOLINE TOWNSHIP SUPPLEMENTAL FOR 1991



FAWK'S ADD.-FILED OCT. 11, 1966 IN PLAT BOOK 41, PAGE 27. M-8924-8936.

PLAT OF GORDON'S SUB-LOTS OF ASSESSORS LOT 4 FILED APR. 14, 1905 IN PLAT BOOK 9, PAGE 19. M. 46-58.

FERNWOOD ADD.-FILED SEPT. 2, 1919 IN PLAT BOOK 14, PAGE 28. M. 3247-3343.

FRANK BLACKWELLS ADD.-FILED SEPT. 10, 1920 IN PLAT BOOK 14, PAGE 68. M. 1435-1454.

FORREST HILL ADD.-FILED AUG. 30, 1911 IN PLAT BOOK 11, PAGE 57. M. 3352-3398